

# PRODUCT IN LINE

## PLASTIC FILTERS



- MINI PLASTIC FILTERS (DISC & SCREEN) MPD, MPE
- PLASTIC MANUAL T MODEL FILTERS (DISC & SCREEN) PE, PD
- PLASTIC MANUAL DOUBLE MODEL FILTERS (DISC & SCREEN) DE, DD
- PLASTIC AUTOMATIC SELF CLEANING DISC FILTERS T MODEL PSC
- PLASTIC AUTOMATIC SELF CLEANING DISC FILTERS DOUBLE MODEL DDSC
- PLASTIC HYDROCYCLONE P20
- PLASTIC SAND MEDIA FILTERS P30
- PLASTIC FERTILIZER TANKS P1100, P1200
- PLASTIC CLAMPS V20
- PLASTIC VENTURIES
- PLASTIC FLANGES

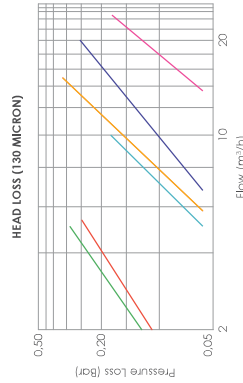
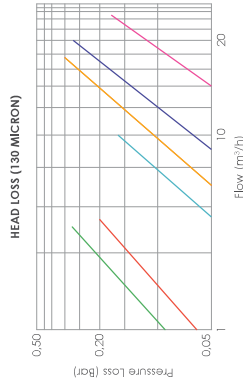
**Mini Plastic Filters**



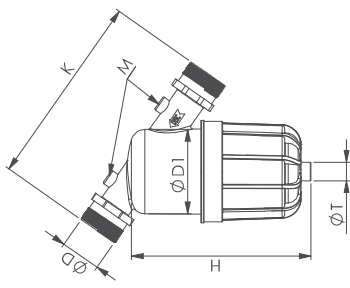
**DISC & SCREEN  
MPD, MPE**

**GENERAL CHARACTERISTICS**

Body Material : PP  
Cartridge Material: PP (Disc) PA (Screen SS 304 Cage PA )  
Maximum Working Pressure : 8 Bar (116 PS)  
Maximum Working Temperature: 60 °C/ 140 °F  
Filtration Degree: 20-50-100-130 micron  
Filter Cartridge: D: Disc Cartridge E: Screen Cartridge



CODE	D	M	T	D1	H	K	FLOW	FILTER SURFACE AREA	WEIGHT
MPE3/4	3/4		1/2	68	190	160	5	165	0.3
MPD3/4	3/4		1/2	68	190	160	5	185	0.45
MPE10	1		1/2	68	190	160	6	165	0.3
MPD10	1		1/2	68	190	160	6	185	0.45
MPD10S	1		1/2	96	230	220	10	300	0.75
MPE10S	1		1/2	96	230	220	10	325	1
MPE15	1 1/2		1/2	96	230	220	15	300	0.75
MPD15	1 1/2		1/2	96	230	220	15	325	1
MPE15S	1 1/2	1/4	1/2	120	280	270	20	515	1.2
MPD15S	1 1/2	1/4	1/2	120	280	270	20	550	1.5
MPE20	2	1/4	1/2	120	280	270	25	515	1.2
MPD20	2	1/4	1/2	120	280	270	25	550	1.5



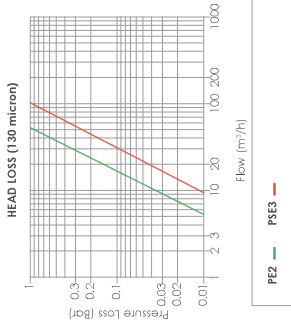
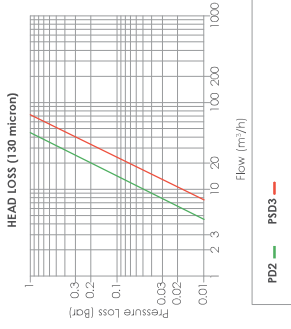
CODE	Connection	Max. flow	Filtration surface (screen)	Filtration surface (disc)
MPE 3/4 - MPD 3/4	3/4" BSP/NPT	5 m³/h	165 cm²	165 cm²
MPE10 - MPD10	1" BSP/NPT	6 m³/h	165 cm²	165 cm²

CODE	Connection	Max. flow	Filtration surface (screen)	Filtration surface (disc)
MPE10S - MPD10S	1" BSP/NPT	10 m³/h	300 cm²	325 cm²
MPE15 - MPD15	1 1/2" BSP/NPT	15 m³/h	300 cm²	325 cm²

CODE	Connection	Max. flow	Filtration surface (screen)	Filtration surface (disc)
MPE15S - MPD15S	1 1/2" BSP/NPT	20 m³/h	515 cm²	550 cm²
MPE20 - MPD20	2" BSP/NPT	25 m³/h	515 cm²	550 cm²



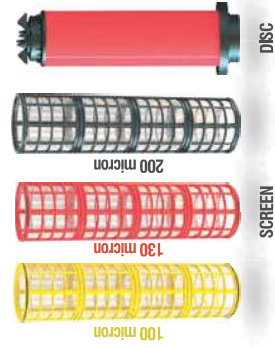
## Horizontal Plastic Disc Filters



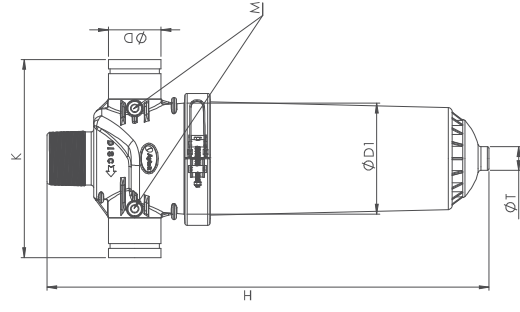
## DISC & SCREEN PE, PD

### GENERAL CHARACTERISTICS

Body Material: PA6GFR30  
 Cartridge Material: PP (Disc) PA, (Screen SS 304 Cage PA)  
 Maximum Working Pressure: 8 Bar (116 PSI)  
 Maximum Working Temperature: 60°C / 140 °F  
 Filtration Degree: 20-50-100-130 Micron  
 Filter Cartridge: D: Disc Cartridge - E: Screen Cartridge



CODE	D	M	T	DI	H	K	Flow Rate	Filtration Area	Weight
	inch			mm	mm		m³/h	cm²	kg
PME2	2	1/4	3/4	190	500	335	20	88	5,2
PMD2	2	1/4	3/4	190	500	335	20	88	6
PD2	2	1/4	3/4	190	600	335	30	132	7
PSD2	2	1/4	3/4	190	750	335	35	154	8
PD25	2 1/2	1/4	3/4	190	600	335	35	154	7,1
PSD25	2 1/2	1/4	3/4	190	750	335	40	176	8,1
PD3	3	1/4	3/4	190	600	335	45	198	7,2
PSD3	3	1/4	3/4	190	750	335	50	220	8,2
PE2	2	1/4	3/4	190	600	335	30	132	5,4
PSE2	2	1/4	3/4	190	750	335	35	154	6,3
PE25	2 1/2	1/4	3/4	190	600	335	35	154	5,5
PSE25	2 1/2	1/4	3/4	190	750	335	40	176	6,4
PE3	3	1/4	3/4	190	600	335	45	198	5,6
PSE3	3	1/4	3/4	190	750	335	50	220	6,5



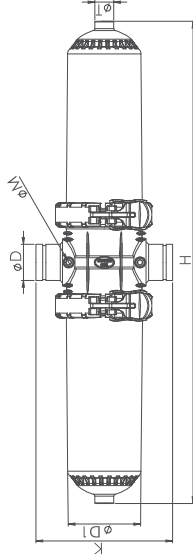


## "4 Double Plastic Filters

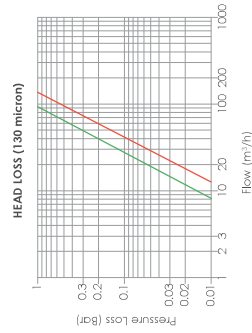
### DISC & SCREEN DD, DE

#### GENERAL CHARACTERISTICS

Body Material: PA6GGFR30  
Cartridge Material: PP (Disc) PA (Screen SS 304 Cage PA)  
Maximum Working Pressure: 8 Bar (116 PSI)  
Maximum Working Temperature: 60 °C/140 °F  
Filtration Degree: 20-50-100-130 Micron  
Filter Cartridge: D- Disc Cartridge - E- Screen Cartridge

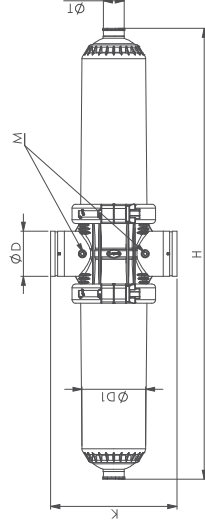
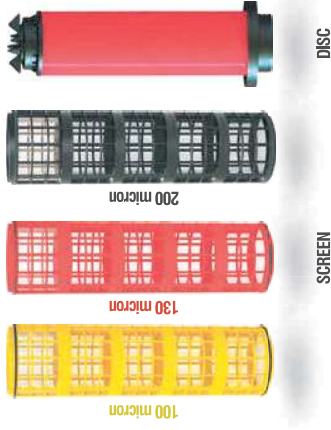


CODE	D	M	T	D1	H	K	Flow Rate		Filtration Area	Weight
							m <sup>3</sup> /h	Usuppm		
DD3	3	1/4	3/4	190	960	340	50	220	2604	11,4
DD4	4	1/4	3/4	190	960	340	70	308	2604	11,6
DDS3	3	1/4	3/4	190	1200	340	60	264	3610	13,6
DDS4	4	1/4	3/4	190	1200	340	80	352	3610	13,8
DE3	3	1/4	3/4	190	960	340	50	220	2280	8,4
DE4	4	1/4	3/4	190	960	340	70	308	2280	8,6
DES3	3	1/4	3/4	190	1200	340	60	264	3040	9,8
DES4	4	1/4	3/4	190	1200	340	80	352	3040	10

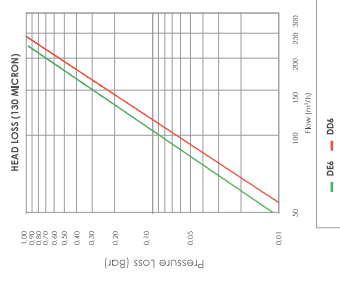


DD3 — DD4

## "6 Double Plastic Filters



CODE	D	M	T	D1	H	K	Flow Rate		Filtration Area	Weight
							m <sup>3</sup> /h	Usuppm		
DD6	6	1/4	1	242	1655	460	180	792	6212	28
DE6	6	1/4	1	242	1655	460	180	792	5532	21



DD6 — DE6

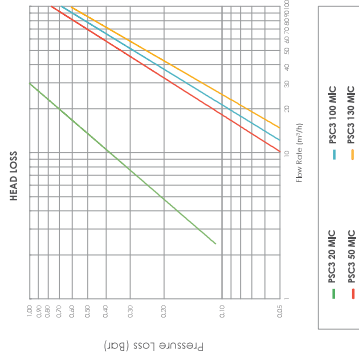
## Plastic Automatic Self Cleaning Disc Filters



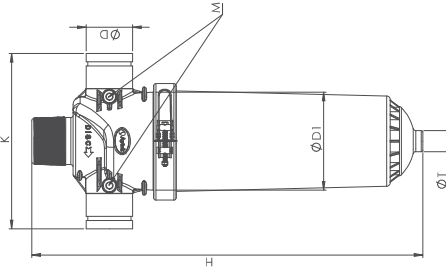
### DISC PSC

#### GENERAL CHARACTERISTICS

Body Material: PA6GGFR30  
Cartridge Material: PP (Disc)  
Maximum Working Pressure: 8 Bar (116 PSI)  
Minimum Working Pressure: 2 Bar (29 PSI)  
Maximum Working Temperature: 60 °C / 140 °F  
Back Flush Operation Criteria: Time And / Or Pressure Differential  
Back Flush Controlling Unit: Electronic (AC/DC) Control  
Filtration Degree: 20-50-100-130 Micron  
Filter Cartridge: D: Disc Cartridge



CODE	D	M	T	D1	H	K	Flow Rate	Filter Surface Area	Weight	
	inch			mm	mm	mm	m³/h	Usqpm	kg	
PSC2	2	1/4	3/4	190	750	335	20	88	1550	9,6
PSC25	2 1/2	1/4	3/4	190	750	335	25	110	1550	9,7
PSC3	3	1/4	3/4	190	750	335	25	110	1550	9,8



#### Automatic Backflush Operation for Self-Cleaning Filter Systems:

Back flush operations starts by sensing pre-defined pressure differential and changing water flow direction by a 3 ways valve. The high downstream pressure accumulated by the water which has flow direction changed while its passing from inside to outside of the filter will overcome the suppression force which press discs down and release discs. Water direction is also moves tangential to discs by that discs start a circular movement and particles which sticks on the surface will be removed and discharged.



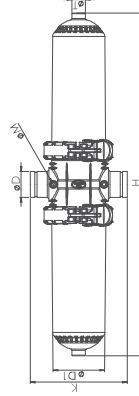
#### Automatic Backflush Operation for Self-Cleaning Filter Systems:

Back flush operations starts by sensing pre-defined pressure differential and changing water flow direction by a 3 ways valve. The high downstream pressure accumulated by the water which has flow direction changed while its passing from inside to outside of the filter will overcome the suppression force which press discs down and release discs. Water direction is also moves tangential to discs by that discs start a circular movement and particles which sticks on the surface will be removed and discharged.



## Double Plastic Automatic Self Cleaning Disc Filters

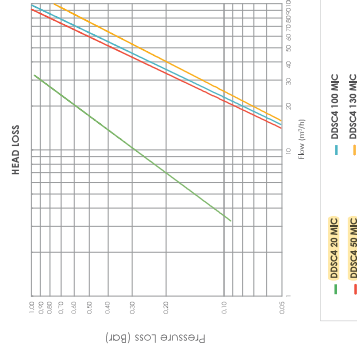
CODE	D	M	T	D1	H	K	Flow Rate	Filter Surface Area	Weight
	inch			mm	mm	mm	m³/h	Usqpm	kg
DDSC3	3	1/4	3/4	190	1200	365	50	220	16,5
DDSC4	4	1/4	3/4	190	1200	365	60	264	16,8
DDSC6	6	1/4	1	242	1655	460	160	704	33



### DISC DDSC

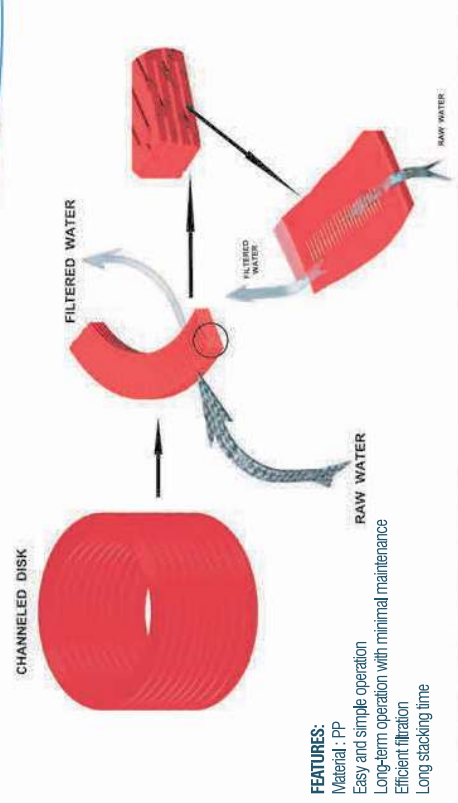
#### GENERAL CHARACTERISTICS

Body Material: PA6GGFR30  
Cartridge Material: PP (Disc)  
Maximum Working Pressure: 8 Bar (116 PSI)  
Minimum Working Pressure: 2 Bar (29 PSI)  
Maximum Working Temperature: 60 °C / 140 °F  
Back Flush Operation Criteria: Time And / Or Pressure Differential  
Back Flush Controlling Unit: Electronic (AC/DC) Control  
Filtration Degree: 20-50-100-130 Micron  
Filter Cartridge: D: Disc Cartridge

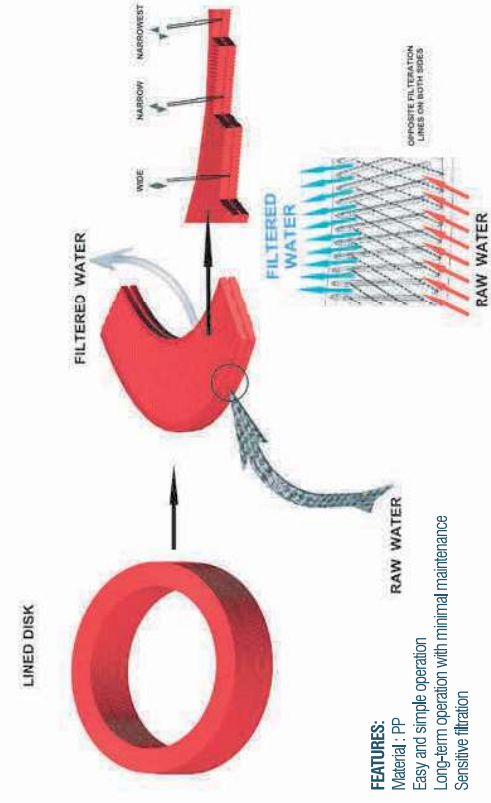


# DISC FILTRATION TECHNOLOGY

## Disc Filtration Technology



- FEATURES:**
- Material : PP
  - Easy and simple operation
  - Long-term operation with minimal maintenance
  - Efficient filtration
  - Long stacking time



- FEATURES:**
- Material : PP
  - Easy and simple operation
  - Long-term operation with minimal maintenance
  - Sensitive filtration

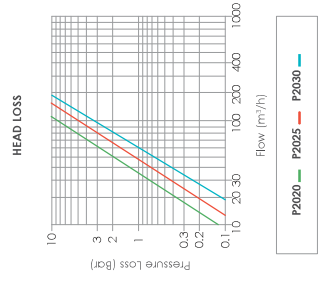


## Plastic Hydrocyclone

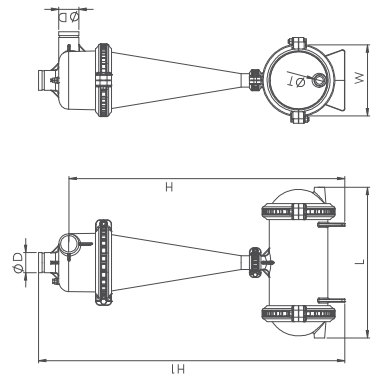


### P20

**GENERAL CHARACTERISTICS**  
 Body Material: PA6GFF30  
 Maximum Working Pressure: 6 Bar (88 PSI)  
 Maximum Working Temperature: 60 °C / 140 °F



CODE	D	T	H	H1	L	W	Flow Rate	Weight
	inch	mm	mm	mm	mm	mm	m³/h	kg
P2020	2	3/4	1023	1154	580	206	20-30	88-132
P2025	2 1/4	3/4	1035	1154	580	206	30-40	132-176
P2030	3	2	1225	1380	670	322	40-60	176-264



## Plastic Sand Media Filters



### P30

#### GENERAL CHARACTERISTICS

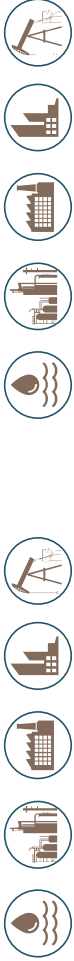
Body Material: PA6GFR30  
Maximum Working Pressure: 6 Bar (88 PSI)  
Maximum Working Temperature: 60°C / 140 °F  
Maximum Sand Capacity: 200 Kg

Aytok Sand Media Filtration systems are designed to filter organic materials and particles which may come from water source in micro irrigation systems.

Sand Media Filter systems is applicable for open water sources such as river lake and dam to eliminate organic matters like algae for agricultural usage. Sand Media Filters are also the most common used filters for water treatment and sludge filtration in industrial areas as well.

- Easy to use and low maintenance requirement
- Single and array design possibilities
- Easy to handle and non-corrosive structure

CODE	A		B		L		D		Flow Rate		Weight	
	inch	mm	inch	mm	inch	mm	inch	DN	m <sup>3</sup> /h	l/s/gpm	kg	lb
P3020	24	300	12	1100	44	2	50	20	88	43	94,8	
P3025	24	300	12	1100	44	2½	65	25	110	43,2	95,2	
P3030	24	300	12	1100	44	3	80	30	132	43,5	95,9	



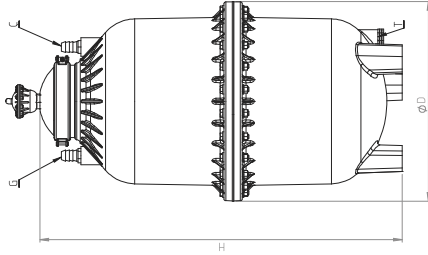
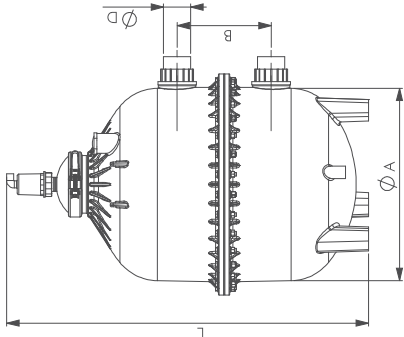
## Plastic Fertilizer Tanks



### P1100,P1200

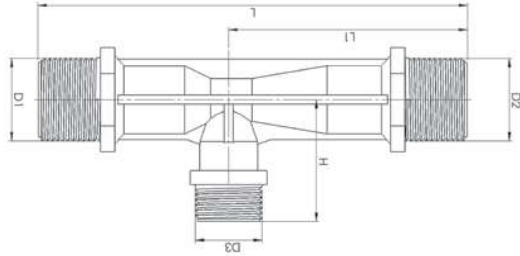
#### GENERAL CHARACTERISTICS

Body Material: PA6GFR30  
Maximum Working Pressure: 6 Bar (88 PSI)  
Maximum Working Temperature: 60 °C / 140 °F



CODE	D		G		Ç		T		H		CAPACITY		WEIGHT	
	inch	mm	inch	mm	inch	mm	inch	mm	inch	mm	lt	Us Gal	kg	lb
P1100	21	914	1	25,4	1	25,4	3/4	19,0	38,6	985	100	26	24	52,9
P1200	28	711	1	25,4	1	25,4	3/4	19,0	42	1050	200	52	36	79,4

**Plastic Venturies**



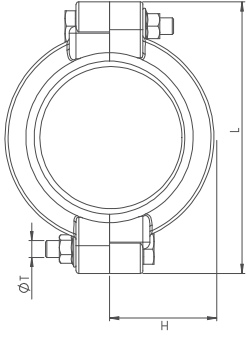
INJECTOR PERFORMANCE TABLE									
P in (Bar)	P out (Bar)	Aspiration Flow (l/h)							
		3/4"	1"	1 1/2"	2"				
0.5	0	9	400	41	480	54	655	146	1000
	0.75	0	11	440	47	500	70	900	174
1	0	13	420	50	514	81	1029	204	1200
	0.25	13	420	50	514	73	1029	202	1200
1.5	0	15	360	47	480	73	800	200	1040
	0.5	15	400	57	514	94	1029	238	1200
2	0	15	400	57	514	94	1029	236	1075
	0.75	15	300	53	480	90	900	242	1075
2.5	0	15	103	53	340	85	655	213	889
	0.5	18	380	64	514	105	1029	268	1200
3	0	18	380	64	514	105	1029	268	1200
	0.75	18	380	64	514	105	1029	268	1200
3.5	0	18	200	64	514	105	1029	268	1040
	1	20	360	70	500	116	1029	285	1200
4	0	20	360	69	480	116	1029	281	1200
	1.25	20	200	69	480	116	900	281	1040
4.22-1	0	20	200	66	343	109	800	272	927
	1.75	2	65	120	1200	126	1029	319	1200
4.22-2	0	21	330	75	500	126	1029	315	1200
	1.25	21	330	75	450	126	1029	315	1200
4.22-3	0	21	330	75	450	126	1029	315	1125
	1.5	21	330	75	450	126	1029	315	1125
4.22-4	0	21	200	75	400	119	655	302	1000
	2	200	73	200	117	277	293	889	527
4.22-5	0	22	300	81	480	135	1029	344	1200
	1	22	300	81	480	135	1029	344	1200
4.22-6	0	22	300	81	480	135	1029	344	1200
	1.5	22	300	81	480	135	1029	344	1200
4.22-7	0	22	300	81	480	135	1029	344	1200
	1.75	22	300	81	480	135	1029	344	1200
4.22-8	0	22	240	79	400	130	800	332	1125
	2	240	79	340	128	655	319	889	527
4.22-9	0	24	280	85	480	143	1029	366	1200
	1	24	280	85	480	143	1029	366	1200
4.22-10	0	24	280	85	480	143	1029	357	1200
	2	24	280	85	480	141	1029	357	1200
4.22-11	0	24	240	85	400	140	1029	357	1200
	2.25	24	180	85	400	138	655	349	1125
4.22-12	0	24	100	83	300	135	277	340	527
	3	24	100	83	300	135	277	340	527
4.22-13	0	24	280	85	480	143	1029	366	1200
	2.75	24	280	85	480	143	1029	366	1200
4.22-14	0	24	280	85	480	143	1029	366	1200
	3.25	24	100	83	300	135	277	340	527

CODE	D1	D2	D3	L	L1	H	WEIGHT
4022-1	3/4	3/4	1/2	169	95	48	0.24
4022-2	1	3/4	166.5	92.5	48	0.27	
4022-3	1 1/2	3/4	280	167	50	0.49	
4022-4	2	2	301	180	60	0.67	

**Plastic Clamps**

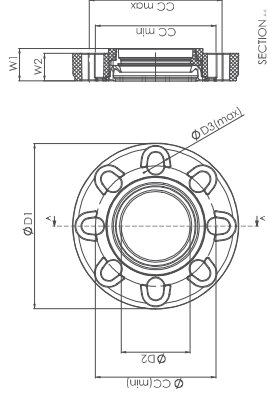


**V20**



CODE	D	H	T	L	MAX PRESSURE	WEIGHT
V2020	2	45	10	133	10	0.37
V2025	2 1/2	55	10	146	10	0.41
V2030	3	62.5	12	165	10	0.6
V2040	4	75	12	195	10	0.72
V2050	5	88	12	230	8	0.82
V2060	6	101.8	14	260	8	0.91

**Plastic Flanges**



CODE	D1	D2	D3	CC min	CC max	W1	W2
VFA3	200	3	18	145	160	39	33
VFA4	228	4	19.5	175	191	39	35
VFA6	285	6	22.3	239	242	49	44